



'20 annual report

community.



# TOGETHER

## We Faced Unprecedented Challenges

*2020 changed everything. Each year brings defining moments, but 2020 impacted the PRPC and the communities we serve with life-changing, paradigm-shifting developments.*

As the world's day-to-day activities came to a grinding halt in late March, our team began deploying technology and modifying procedures so that 9-1-1 services, workforce development and city government resources, and benefits to the aging, families and children would not be delayed. In some ways, life went on as usual - we were expected to still do our work. But in other ways, it was a year like no other in our lifetime. *Stopping wasn't an option.*

### THE LESSONS WE LEARNED IN 2020 WILL LAST A LIFETIME



#### RESILIENCE

The Texas Panhandle is highly resilient.



#### INNOVATION

Hard work and innovation kept things running through the hardest of times.



#### HARD WORK

People of the Texas Panhandle will work through any challenge.



#### COMMUNITY

Nothing is more important than relationships and community.

“Alone we can do so little.  
**Together** we can do so much.”

- HELEN KELLER

# Panhandle Regional Planning Commission

---

The Panhandle Regional Planning Commission is a voluntary association of cities, counties, and special districts in the Texas Panhandle. Established in 1969, the Planning Commission assists local governments in planning, developing, and implementing programs designed to improve the general health, safety, and welfare of the citizens in the Texas Panhandle.

Since 1969, the Planning Commission has been involved in a wide range of projects and programs. Activities currently include initiatives in the areas of workforce development, aging, local government services, economic development, dispute resolution, 9-1-1 services, criminal justice, solid waste management, emergency preparedness, transportation planning, water planning, regional services, and technical assistance to the local governments of the Panhandle.

---

*The Planning Commission is an organization of, by, and for local governments. It was created based on the concept that more can be accomplished by local governments acting cooperatively rather than alone.*



427,927

**REGION POPULATION**

**26**  
COUNTIES

**62**  
CITIES

**94**  
MEMBER  
GOVERNMENTS

**06**  
SPECIAL  
DISTRICTS



26,000  
SQUARE MILES

## PRPC CITIES

Adrian	Dalhart	Hart	Nazareth	Sunray
Amarillo	Darrouzett	Hedley	Palisades Village	Texhoma
Bishop Hills	Dimmitt	Hereford	Pampa	Texline
Booker	Dodson	Higgins	Panhandle	Timbercreek
Borger	Dumas	Howardwick	Perryton	Tulia
Bovina	Estelline	Kress	Quitaque	Turkey
Cactus	Farwell	Lake Tanglewood	Sanford	Vega
Canadian	Follett	Lakeview	Shamrock	Wellington
Canyon	Frona	Lefors	Silverton	Wheeler
Channing	Fritch	McLean	Skellytown	White Deer
Childress	Groom	Memphis	Spearman	
Clarendon	Gruver	Miami	Stinnett	
Claude	Happy	Mobeetie	Stratford	

## PRPC COUNTIES

Armstrong	Deaf Smith	Hutchinson	Randall
Briscoe	Donley	Lipscomb	Roberts
Carson	Gray	Moore	Sherman
Castro	Hall	Ochiltree	Swisher
Childress	Hansford	Oldham	Wheeler
Collingsworth	Hartley	Parmer	
Dallam	Hemphill	Potter	

## PRPC SPECIAL DISTRICTS

Canadian River Municipal Water Authority	Palo Duro River Authority
Greenbelt Municipal and Industrial Water Authority	Panhandle Ground Water Conservation District
Mackenzie Municipal Water Authority	Red River Authority



# Letter from the Board Chair

---

I hope this letter finds you and your loved ones healthy and safe.

2020 has been a year like none we've ever experienced. During this monumental year, COVID-19 caused tremendous disruption for the communities we serve and in the way we work. In spite of a world-wide pandemic, the PRPC remained fully operational. Staff accepted the challenge of working remotely, using technology, wearing masks and they continued to get their work done and perform very well.

## **The PRPC consists of outstanding people.**

I want to recognize the outstanding effort of the PRPC staff and Executive Director, Kyle Ingham, who was named director just two years ago. Kyle has shown exceptional effort and fortitude in performing his job. He didn't expect to have COVID-19 weighing on him or anticipate making decisions about where the staff works, how they work and what they work on. Kyle and his entire staff have handled 2020 magnificently.

**We have accomplished more than anyone thought possible.** Among many other accomplishments, I'm particularly proud that we were able to get a new building for the Workforce Solutions. There is still work to be done on the new building, and I look forward to an anticipated move in 2021.

COVID-19 has been very hard on all 26 counties and especially the smaller counties, that don't have a large tax base. Sales tax revenues went down in many counties, and many of these counties are hurting. We continued our efforts and are doing

everything we can to assist them through this crisis.

**Community is the fabric of the Texas Panhandle.** It is the working together of the entities that make up the community. Great leaders and many of the 26 County Judges serve with me on the Board of Directors. When these Judges and leaders come together and work together, they form the first step of community.

I miss the staff and my fellow board members. It's tough not having board meetings in person and not interacting face-to-face. I can't wait until we can meet in person again and for the staff to be able to interact with the public. In spite of the changes, our sense of community is stronger than ever.

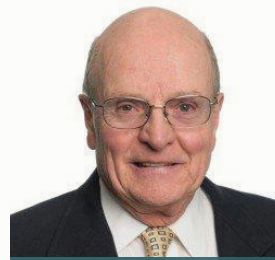
While standing six feet apart may be necessary this year, we will not distance ourselves from the community. **Together we can do so much.**

*William Hallerberg*

**WILLIAM HALLERBERG, Ph.D**  
2020 PRPC Board Chair



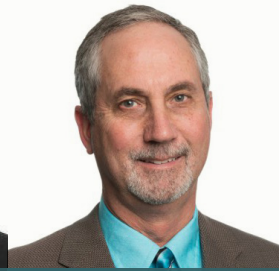
# 2020 Board of Directors



**William Hallerberg**  
Chair  
Canadian River Municipal  
Water Authority



**Winston Sauls**  
Vice Chair  
Citizens Representative,  
Borger



**Dan Looten**  
Secretary/Treasurer  
Judge,  
County of Carson



**Don Allred**  
Judge,  
County of Oldham



**Juan Cantu**  
Commissioner,  
County of Lipscomb



**Cleo Castro**  
Citizens Representative,  
Cactus



**Buster Davis**  
Mayor,  
City of Gruver



**Irene Favila**  
Citizens Representative,  
Hereford



**Ronnie Gordon**  
Judge,  
County of Hartley



**Raul Hernandez**  
Citizens Representative,  
Amarillo



**Ernie Houdashell**  
Judge,  
County of Randall



**John Howard, M.D.**  
Judge,  
County of Donley



**John James**  
Judge,  
County of Collingsworth



**Harold Keeter**  
Judge,  
County of Swisher



**Jay Mayden**  
Judge,  
County of Childress



**Wayne Nance**  
Judge,  
County of Briscoe



**Ginger Nelson**  
Mayor,  
City of Amarillo



**Karen Price**  
Citizens Representative,  
Pampa



**Walter "Four" Price**  
Texas House of  
Representatives, District 87



**Salvador "Sal" Rivera**  
Sheriff,  
County of Castro



**Yolanda Robledo**  
Alderman,  
City of Bovina



**Phillip Self**  
Greenbelt Municipal and  
Industrial Water Authority



**Tobe Shields**  
Mayor,  
City of Spearman



**Pat Sims**  
Commissioner,  
City of Dumas



**Kerry Symons**  
Mayor,  
City of Perryton



**Nancy Tanner**  
Judge,  
County of Potter



**Ricky White**  
Mayor,  
City of Friona

# Letter *from the* Executive Director

---

It has been quite a transition from the celebration of 50 years of service in 2019 to a changed world due to the COVID-19 pandemic in 2020; here at the Panhandle Regional Planning Commission and across our region.

Panhandle communities, people, and institutions have all been faced with challenges and fears that none of us have seen in our lifetimes. However, in typical fashion those same communities, people, and institutions have risen to meet the challenges with resounding efficiency.

**We have an incredible staff.** I am humbled and proud to say that the staff, board, and everyone associated with the Planning Commission have been on the forefront of meeting head on the challenges of the current environment. We have continued to provide every service we had in place before the pandemic hit even if they are administered in new and innovative ways. At the same time, we have been able to institute a myriad of response programs and provide information that helps the cities, counties, and people of the Texas Panhandle adjust to what, at this moment, feels like a new normal.

**Words cannot express the gratitude and pride that I feel** for the staff of this organization. While writing this letter each year, I take the opportunity to reflect on the wonderful men and women, who every day, make the efforts of PRPC possible. However, this year the essential nature and fearless work ethic of these staff members has been even further highlighted. With only two weeks planning and collecting key technology resources, we moved 43 staff members from their traditional work environment to a work-from-home solution. For almost three months the majority of our staff worked from home and did not miss a beat on providing services to those that depend on us every day. At the same time a few fearless staff members continued to come into the building amid uncertainty to keep the key infrastructure of the organization moving. To the staff of the PRPC, the words “Thank You” do not do my appreciation justice.

**We work for the cities, counties and people of the Texas Panhandle.** This phrase has long been and continues to be, one of the key philosophies of this organization. One big challenge of 2020 has been the empathy and hurt we feel for those cities, counties, and people as they valiantly adjust to meeting local needs. I am so pleased with the agility that this political subdivision of the State of Texas has shown as we try to help the people that are adjusting to new local needs.

**Commitment to excellence.** The Board of the PRPC and the advisory committees that oversee our response to these local needs have shown unrivaled calm, vision, innovation, and commitment to excellence that should be an exemplar for all governmental entities at this time. Again, the words “Thank You” are simply insufficient.

**Thank you just isn't enough.** Though the words “Thank You” seem to be small, they are the only words available in the English language to express great appreciation. With that said, *THANK YOU to the Board, Staff, Advisory Committee Members, and communities that make up the Panhandle Regional Planning Commission.*

**Alone we can do so little.** Together we can do so much. In a time of change and uncertainty I can't think of any better group of communities, people, and institutions to be with, *together.*

**KYLE INGHAM**  
PRPC Executive Director





# PRPC Staff



Ami Acker  
2019



Gracie Aragon  
2008



Sharee Bailey  
1989



Lori Bigham  
2018



Becky Blair  
2015



Randy Braidfoot  
2013



Shane Brown  
2010



Kathy Cabezuela  
2015



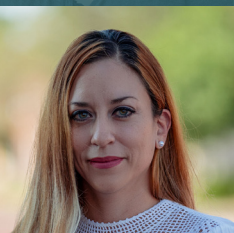
Khasi Campos  
2012



Melissa Carter  
2000



Kathryn English  
2016



Yvette Gaytan  
2008



Alex Guerrero  
2018



Lori Gunn  
2014



Deshayne Hall  
2020



Lisa Hancock  
2006



Leslie Hardin  
2000



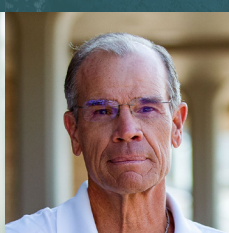
Cristy Henderson  
1994



Kyle Ingham  
2000/2008



Christopher Jackson  
2020



John Kiehl  
1987



Julie Lyles  
1998



Enrique Mata  
2020



Josie Mayorga  
2016



Laurie McAfee  
2013



Dustin Meyer  
2014



Stephine Neuwirth  
2016



Emily Nolte  
2016



Katie Paul  
2019



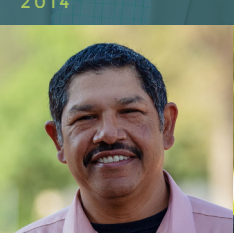
Michael Peters  
2000



Georgette Pond  
2015



Heather Reid  
2017



Marin Rivas  
2014



Sundee Rossi  
2011



Rebecca Rusk  
1990



John Schaumburg  
2010



Janet Schulte  
1993



Felicia Shaffer  
2014



Jaime Sharp  
2013



Trenton Taylor  
2019



Heike Todd  
1993



Isabell Villarreal  
2019



Melissa Tye Whitaker  
2018



Inger Williams  
1994



Paige Witthar  
2018



Craig Wolf  
2016

# Workforce Development

*PRPC's Workforce Development division helps Texas Panhandle employers recruit, hire, and retain qualified workers. The programs provided through Workforce Solutions also help job seekers in finding and keeping stable employment. In spite of the challenges faced through the COVID-19 Pandemic, the staff continued its work to help people of the Texas Panhandle find employment.*

With extraordinary effort, Workforce Solutions transitioned to serving customers virtually on March 23 and by April 13, moved all but four of the 68 staff members to a remote working environment.

12,321

**JOB SEEKERS  
HELPED IN THEIR  
SEARCH FOR  
EMPLOYMENT**

1,256

**QUALIFIED  
WORKERS  
FOUND  
THROUGH WSP**

11

**JOB FAIRS  
HOSTED**

3,300

**JOB SEEKERS  
SERVED**

250

**EMPLOYERS  
SERVED**

8,090

**JOB SEEKERS  
TO ENTER  
EMPLOYMENT**

**18,743**

Individuals Registered

**19,099**

Distinct Individuals Received Services

**24,205**

Individuals Received Services through WIT (WorkInTexas.com)

**10,688**

Services Provided to Employers

**2,384**

Employers Served (8/1/18 - 9/1/19)

**3,485**

Individuals Placed in a Job

**4,229**

Internal Job Orders Created

**1,378**

Individuals Received Services through Virtual Recruitment

**26,048**

Resumes Added

**18,333**

Distinct Internal Job Order Referrals

COVID-19 | RESPONSE



# New Website + Portal

In March, a new website and secure portal was launched that allows customers to create accounts to share information securely and eliminates the need to deliver paperwork or meet with staff. Using Zoom and the new website, the team was able to quickly adapt to the new working environment and offer curbside services by appointment.



27,279

users .....



203,741

pageviews .....



65,625

sessions .....

**2,300**

UNIQUE CUSTOMER ACCOUNTS WERE  
CREATED IN THE FIRST SIX MONTHS OF USE



# Employer Services

## VIRTUAL JOB FAIR PLATFORM

was purchased to support hiring events in the area during social distancing with the cancellation of large scale events.

**40**  
JOB POSTINGS

**118**  
JOB SEEKERS

**406**  
PAGE VISITS

**14**  
EMPLOYERS

**88**  
JOB APPLICATIONS SUBMITTED



---

## ASSISTANCE FOR EMPLOYERS

Workforce Solutions hosted two webinars for employers. Nearly 400 local employers attended virtually and submitted questions to local labor law attorneys. A third webinar exclusively for childcare providers featured information about the Paycheck Protection Program with Gina Woodard at the Small Business Development Center.

# Job Seeker Services

## HIRING RED WHITE & YOU

Veterans job fair November 7, 2019. This annual, state-wide coordinated event brought hiring opportunities to veterans and helped connect them with employers who prioritize hiring vets. Approximately 40 employers participated including Pantex, Valero McKee Refinery, Xcel Energy, Phillips 66, Atmos Energy, Street Volkswagen, and the City of Amarillo.



## WORKFORCE INNOVATION AND OPPORTUNITY ACT (WIOA)

The WIOA program funds training for individuals who may have been dislocated from their current job or lack the skills necessary to remain self-sufficient. Funds available through the Out of School Youth program assisted Savanna in completing her education at Frank Phillips College.

### SAVANNA

At age 15 Savanna helped take care of her grandma and that was when she knew she wanted to help others. Her first job was at a nursing home in housekeeping – she was doing something but it wasn't enough to help them. Savanna joined a Certified Nursing Assistant class, became certified and in 2019 was accepted into the Licensed Vocational Nurse program.

Workforce Solution's Youth program provides financial assistance to pay for tuition, fees, and supplies such as nursing scrubs. Childcare assistance made attending school a reality and according to Savanna, the encouragement of the staff at Workforce Solutions was as important as the financial help. Savanna could not have finished without a secondary support system.

## TRAINING PROJECTS

High-Demand Job Training (HDJT) programs utilize EDC's regional tax dollars to bring Texas Workforce Commission (TWC) matching federal grants to the region. The combined funding is then used to purchase equipment for eligible educational institutions for the purpose of developing career and technical education courses and may include courses offering dual-credit and technical education programs.

PRPC has partnered with the Economic Development Corporations in Amarillo, Borger, Childress, Clarendon, Dalhart, Pampa, and Perryton; Clarendon College and Frank Phillips College; and the Independent School Districts (ISDs) of Amarillo, Bushland, Canyon, Highland Park, and River Road. These projects invested over a combined total of more than \$1.2 million in students – the future workforce of the Panhandle.

\$1.2 MILLION

Invested in the future workforce of the Panhandle.



## CDL TRAINING

Workforce Solutions, in partnership with the Amarillo College Truck Driving Academy, sponsored 75 students (including a July class which was developed specifically for Workforce Solutions students) to become certified as a Commercial Motor Vehicle Driver. Truck driver jobs continue to be one of the top five most advertised careers in the Texas Panhandle.

# Success Stories

---



## DAVID WALKER

At the time of enrollment, David Walker didn't have a vehicle. He received transportation assistance, and was able to purchase clothing for interviews and employment. Since becoming employed full-time in September of last year, David has been able to start saving for a car to overcome this barrier, pay child support, and continues to maintain living-wage employment.

*"Thanks to the wonderful staff, never giving up on me and showing incredible kindness. I am happy and love my job. Thank you TWC."*



## TERRY FARRAR

At time of enrollment, Terry was living and working at the Salvation Army, struggling with medical issues and was also without transportation. Terry is now living in his own apartment and is currently saving up money to purchase a vehicle. He has earned all three employment retention incentives, and since enrolling in the NCP program, Terry has also been able to pay towards his child support.

*"Workforce Solutions helped me get back on track by encouraging me to set realistic goals and by achieving those goals, I have set myself up for success and created a future that I can be proud of."*



## ISABEL VILLAREAL

When Isabel was laid off, she turned to Workforce Solutions for help in finding new employment. Isabel attended several workshops that helped her develop her resume and do well in job interviews. She utilized all available resources to aid in her job search. Isabel is now employed in the Aging Field and was thrilled to tell the Workforce Team that their efforts had helped her find employment at the same organization.

# Childcare Services

*A major difficulty that low-income persons in training and employment face is accessing affordable childcare. Each year, Workforce Solutions staff provides financial assistance to 2,500 eligible families in need of such aid. Over 4,000 children annually receive subsidized care through 150 licensed daycare centers and other providers.*

## COVID-19 | RESPONSE



### CHILDCARE ESSENTIAL WORKERS

In the early stages of COVID-19, Essential Worker parents (nurses, first responders, gas station attendants, grocery stores employees, etc.) received assistance to pay the cost of childcare expenses while supporting critical infrastructure needs of the community. Over 450 children were enrolled in this care beginning in mid-April and approximately \$600,000 in federal funds paid for three months of childcare for these essential families. Families applied for these services online utilizing the new client portal.



Workforce has been our only support during COVID and we are so grateful that they stepped in to pay for the children of workers enrolled in their program. They helped us keep our staff and saved our business."

-TAMME PINKERT

## COVID-19 | RESPONSE



### WORKFORCE SOLUTIONS PANHANDLE

Provided disinfecting wipes, disinfecting cleaner, personal protective equipment/ materials including gloves, masks, and digital thermometers for 74 childcare providers. Providers responded with gratitude, and relief that supplies arrived 'just in time.' Directors have expressed thanks that Workforce Solutions Panhandle is thinking of their needs.



Student  
TAMMES TENDER  
TOUCH TOO



## COVID-19 | RESPONSE



## FUNDING TO KEEP CHILDCARE OPEN

**Tammes Tender Touch Too** and **Friendship Ranch** were able to pay staff during times they were forced to close due to the pandemic by paying staff who must quarantine for extended periods and to use “extra” staff not needed in the classrooms due to low numbers for other things like deep cleaning, painting, and yard work rather than lay off staff.

**Tamme Pinkert**  
TAMMES TENDER TOUCH TOO



# Area Agency on Aging

*The Area Agency on Aging (AAA) serves as the advocate for the Panhandle's elderly population. The AAA offers a range of comprehensive and coordinated programs designed to assist the region's elderly population and those who care for them.*

## COVID-19 | RESPONSE



The AAA has always believed we must see our clients to provide services. COVID-19 showed staff that our population is more flexible and agreeable to receiving services through the phone, mail and even email, enabling us to continue providing much-needed services throughout the pandemic. We do still look forward to seeing our clients face-to-face again.

Wesley Community Center  
AMARILLO

## Benefits Counseling

Seniors often need assistance in understanding, applying for, and obtaining services. Volunteers are a significant key to delivering this needed benefit. These men and women assist in the Benefits Counseling and Ombudsman programs. This year the volunteers provided 4,053 one-on-one benefits counseling hours.



I enjoy fellowship with people in the Center, I love it, and the meals are good and nutritious. I sure do enjoy good warm meals."

- FELA LOPEZ





Wesley Community Center  
AMARILLO

## Nutrition Services

---

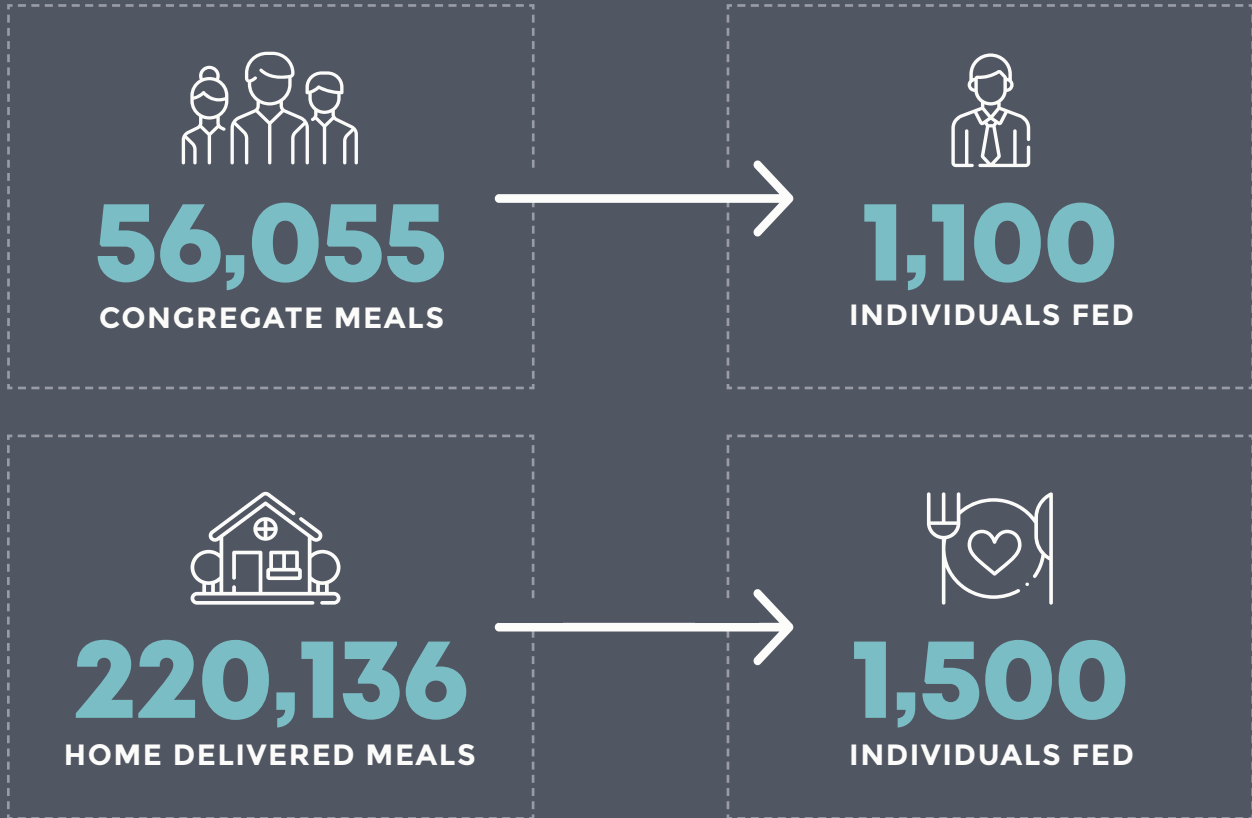
Nutrition services programs continue to be one of the core strategies of the AAA for reducing food insecurity among the elderly. These vital community-based programs, serving persons aged 60 and over provide access to congregate meals in a group setting, as well as home-delivered meals. The AAA served 199,195 meals, funded by the Older Americans Act, to the elderly this year.

## Education, Training, and Respite Care Services for Caregivers

---

Hundreds of caregivers live in the Panhandle and spend much of their time caring for family members who need constant attention and assistance. To assist these caregivers, the AAA staff provides education and training to educate caregivers in the best methods of caring for a loved one, as well as the importance of having a support group and how to organize one. Because caregiving is emotionally draining, these caregivers need a break from time to time. The AAA staff members provide respite care to these caregivers so they can recuperate from the stresses of caregiving, and take care of their own personal and emotional needs. The AAA provided these caregivers a total of 10,163 hours of respite care during the year.

# Nutrition, Transportation, In-home Services, Respite and Supplemental Services



**6,760** hours of one-on-one assistance through care coordination, caregiver support and benefits counseling

**3,380** Assisted unduplicated individuals

**4,225** total unduplicated individuals receiving any type of AAA service

**3,700** information, assistance + referral individual contacts



Wesley Community Center  
AMARILLO

## COVID-19 RESPONSE

# Emergency ..... Gift Card Program

During the COVID-19 Pandemic, AAA staff moved quickly to develop a program designed to offer the ability to purchase food and essentials to those in need. \$500,000 is allocated for the entire Panhandle. The program began in June and to date, has distributed almost 631 \$500 cards.



# Local Government Services

*Over the last 30 years, the Local Government Services department has evolved to meet the needs of the cities and counties of the Texas Panhandle. With a focus on being an extension of the staff in local government, PRPC has developed many unique and useful programs.*

The Local Government Services group assists the cities and counties of the Texas Panhandle in addressing community development and infrastructure needs. Results of these services can be seen with such community improvements as new water infrastructure, sewer lines, parks, and street paving. The Planning Commission plays a part in multiple phases of these projects for its members, from assisting with grant preparation, to administrative management of construction activities, construction contracts, compilation, and submission of all required reporting upon project completion.

## Block Grants

---

Since inception in 1983, PRPC has provided project administration services on over 300 Community Development Block Grant projects totaling \$75 million in grants to communities in the Texas Panhandle.

Those projects include the construction and installation of 950,000 linear feet of water line, 200,000 linear feet of sewer line, 60 water wells, 30 ground storage tanks, 30 elevated storage tanks and 17 lift stations.

**950,000**

**FEET OF WATER LINE  
INSTALLED**

**60**

**WATER  
WELLS**

**30**

**ELEVATED  
STORAGE TANKS**

**200,000**

**FEET OF SEWER LINE  
INSTALLED**

**30**

**GROUND  
STORAGE TANKS**

**17**

**LIFT  
STATIONS**

# City Management

---

PRPC continues its long-time service of delivering City Management Services to communities that cannot afford full-time administrative personnel.

PRPC has provided City Management Services to the Village of Lake Tanglewood since January 2000 and Timbercreek Canyon since February 2001. In 2020, LGS provided three months of interim City Manager services while also conducting a professional search for the Cities of Silverton and Spearman along with other searches.



Lake Tanglewood



**Brian Barboza**  
SILVERTON CITY MANAGER

## Local Government Job Search Assistance

---

Since 2005, the LGS has conducted over twenty professional job searches to assist local governments in hiring for professional positions including: City Manager, City Secretary, Finance Director, Planning and Zoning Director and EMS Director.

In 2020, LGS provided professional recruitment and search services for the Cities of Spearman and Silverton and successfully hired new City Managers in each respective city.



**Wade Willson**  
SPEARMAN CITY MANAGER



**Hartley County Elevated Storage Tank  
Painting and Rehabilitation**  
COMPLETED IN 2020

## Project Administration and Management Services

---

PRPC prepared many applications and developed nine new grant-funded projects for community development. These grants range from public water and sewer improvements, to the purchasing of new firetrucks in the Texas Panhandle. These projects total over \$2.85 million in grant funding to Panhandle Communities.

PRPC provided project administration and management services to cities and counties on over 25 grant-funded projects that include ten different grant programs and six different funding agencies. Cities that received a new TXCDBG grant project in 2020 include:

**Cactus | Bovina | Hereford | McLean | Quitaque | Spearman | Memphis | Borger**



# Texas Parks and Wildlife Grant Programs

LGS staff provides application and administration services for Texas Parks and Wildlife grant programs across the Texas Panhandle. Projects range from swimming pools to walking paths and playgrounds.

This year LGS staff provided grant application services to the Cities of Cactus and Quitaque for the newly funded field renovation project and playground equipment project respectively.



# Texas Revenue Recovery Association

Since 2003, the PRPC has administered the Texas Revenue Recovery Association (TRRA) system. Originally, the system focused only on the Texas Panhandle, but as communities outside of the region have requested admission to the program it has expanded statewide. TRRA was originally started by a small group of cities in the Texas Panhandle looking for a way to collect the unpaid bills from the residents as they move to a new town. Residents were moving from town to town leaving large utility bills behind each time.

The TRRA provides member communities the opportunity to track and recover these bills from other cities as people move from city to city. Currently, over 60 cities participate in TRRA with more added each year.

PRPC has conducted a comprehensive upgrade to the TRRA system. This upgrade will improve the systems database and analytics while making day-to-day operations easier for individuals inputting data and delinquent accounts. With the more user-friendly system, TRRA is seeing a rapidly increased interest across the state.

**82** MEMBER CITIES : Approximately **\$50,000** in outstanding utility bills have been collected through TRRA

# Regional Transportation Planning

*Under guidance of the Texas Department of Transportation, the PRPC serves as lead agency for the Texas Panhandle to develop regional public transportation initiatives. The Planning Commission also supports the transportation planning efforts of the local elected officials under the auspices of the Panhandle Rural Planning Organization and the Rolling Plains Organization for Rural Transportation.*

## Maximize Public Transportation

---

The PRPC continued its long-time service as the administrator of the Panhandle Regional Organization to Maximize Public Transportation. This committee brings together transit providers, transit riders, representatives of advocacy organizations for the elderly, disabled, and low-income persons, and veterans. PRPC has been involved in regional transportation planning for under-served communities since 2006.

## Regionally Coordinated Transportation Plan

---

The first Regionally Coordinated Transportation Plan was drafted in 2006 with funding from the Texas Department of Transportation. This plan identified transit needs including mobility management support, the creation of an independent transit network, and planning ideas to increase job access in several rural communities.

Over the years, these needs have evolved with the changing status quo of transportation in the region. The 2017-2021 Regionally Coordinated Transportation Plan is currently identifying goals including reducing the number of persons reporting that transportation is a barrier to education, healthcare, and social services. The Panhandle Regional Organization to Maximize Public Transportation is actively working to plan for solutions to identified needs and service gaps in the region.

# Rural Transportation Planning Groups

PRPC has continued to administer two regional transportation planning groups including the Panhandle Rural Transportation Planning Organization and the Rolling Plains Organization for Rural Transportation. PRPC has administered these planning organizations since 2009. These organizations work in conjunction with local Texas Department of Transportation staff to plan for future projects, unmet needs, and other issues in the region.

## Received TxDOT Funding

In 2020, staff applied to TxDOT to receive funding for the purposes of creating a new five-year Regionally Coordinated Transportation Plan. PRPC received approximately \$130,000 over the course of an 18-month period to begin work on this plan.

PRPC staff also applied for and received funding for a TxDOT demonstration project for the development and implementation of a region-wide public information campaign and launch of a website to contain transit information. This project is aimed at increasing access to transit for low-income, elderly, and disabled individuals in the region in the form of correct, up-to-date, and easily accessible information. PRPC will receive \$125,000 for a two-year period for the completion of this project.

### COVID-19 RESPONSE



## Public Transportation

While regional public transportation was interrupted during the COVID-19 pandemic, riders adjusted to new requirements and the average daily number of rides has remained the same. Though COVID-19 has interrupted much of daily life, people still need to get to work, medical appointments, grocery stores, and other essential services. Providers have responded to these needs and considered public health precautions to continue to deliver a comparable level of service for riders.

PRPC's role in regional public transportation has historically been in planning for regional goals. In the wake of the COVID-19 pandemic, PRPC is entering into the planning process that will inform the next five years of regional growth in public transit. PRPC staff are taking a new look at response and mitigation efforts for our public transportation providers.



Local Government Services Staff  
PRPC

# Regional Water Planning

*Since its inception in 1997, the PRPC is honored to work with the state-mandated Regional Water Planning efforts in the Texas Panhandle. The PRPC, through the Local Government Services staff provides many services in the area of Regional Water Planning.*

Through years of experience in the water field, LGS staff has developed expertise in water planning, understanding water law, groundwater modeling, and availability/demand analysis in order to better serve the regional water planning effort.

Continuing nearly a decade of water planning initiatives the PRPC serves as the administrative agent for the comprehensive water planning process for the region. When dealing with an ever-declining water resource such as the Ogallala Aquifer, the challenge of water planning is the ongoing discussion and initiatives that balance the needs of today with the need to conserve water for future generations.

In 2020, LGS continued to work with the Panhandle Water Planning Group (PWPG) in the five-year planning cycle, including the completion of the Initially Prepared Plan (IPP). The IPP is the first step in finalizing the five-year regional water plan which is set to be officially approved and submitted to the Texas Water Development Board (TWDB) in October 2020. The total committed grant funds from the TWDB for the five-year planning cycle is \$671,294.

# Groundwater Management Area #1 Desired Future Condition

---

HB1763 in 2003 required that Groundwater Management Areas (GMA) comprised of the Groundwater Conservation Districts within the region plan jointly to establish a Desired Future Condition (DFC) for the major aquifers within a region.

In 2020, PRPC assisted the GMA#1 through a Request for Qualifications process and awarded a professional services contract to assist the Joint Planning Committee through the 2021 DFC adoption cycle.

The GMA#1 has contracted with PRPC for administrative services for over two years as the group moves towards meeting its legislative mandates. The group is now involved in the third round of regional water planning and current activities include work on population projections and water use projections for the planning horizon.





# Economic Development

*The PRPC's Economic Development Program assists local government entities and area businesses in enhancing the economic environment and encouraging the sustainable development of the region.*

## Panhandle Economic Development District

---

For over 30 years, PRPC has served as the fiscal and administrative agent of the Panhandle Economic Development District and worked on a multitude of applications for Economic Development Assistance throughout the region.

### **EDA CARES SUPPLEMENTAL FUNDING**

In 2020, LGS applied for and received \$400,000 in EDA CARES Supplemental Funding. Funding will be used to hire a dedicated Regional Disaster Economic Recovery Specialist who will assist communities in identifying economic development grant-eligible projects with state and federal resources; serving as a liaison between local, state, and federal partners in order to speed the recovery process.



When we were at the end of our rope and felt like the coffee shop wasn't going to happen, the PRPC came through and filled in the gap for funding with a micro-loan. We are thankful for the time and effort they spent to make our business a reality."

**-NOAH & STEPHANIE LITTLEJOHN**

# Downtown Revitalization Projects

In 2020, PRPC staff worked with the Cities of Memphis and Borger to develop and submit applications to the Downtown Revitalization program at the Texas Department of Agriculture. Both cities received grant awards for \$350,000 and are currently working on improving sidewalks, a parking lot, and other slum and blighted conditions in their respective downtowns. Staff is assisting with application preparation for seven Downtown Revitalization applications for the Cities of Silverton, Pampa, Spearman, Wellington, Dumas, Wheeler, and Borger and a Main Street application for the City of Canyon for similar projects in the upcoming year.

# Amarillo MSA and Rural Micro-Loan Programs

Since 2007, the PRPC has operated the Amarillo MSA and Rural Micro-loan programs to address long-term economic adjustment problems affecting the PRPC region including loss of population, low per capita income levels, and slow growth in employment.

The Rural Micro Loan and Amarillo MSA Micro Loan programs provide financing to small businesses in the region that help create jobs. During the past year, the Economic Development staff managed 10 active micro-loans totaling over \$250,000 leading to economic growth and job creation in the region.



**Journey Coffee**  
 NOAH & STEPHANIE  
 LITTLEJOHN



**Zita Repair & Detail**  
 RANDY WEATHER, LORENA WEATHERS,  
 & CINDY FLYNN



Regional Services Staff  
PRPC

# Regional Services

*The PRPC Regional Services Staff collaborates with local governments and organizations to provide guidance and services within the Emergency Preparedness, Solid Waste Management, and Criminal Justice Programs.*

# Emergency Preparedness

*The Emergency Preparedness Program supports the state's Homeland Security strategic plan. Its main goal is to better prepare the Panhandle's first responders to thwart, respond, or recover from large-scale, man-made or natural disasters.*

## PANCOM

PRPC staff remained on call 24/7/365 this past year ensuring that PANCOM, the region's public safety interoperable communications system, was kept fully operational all year long.

PANCOM supports radio communications by and between the region's first responder agencies. It's essential the system remains fully functional at all times. PANCOM is also equipped with microwave radios that provide backup to the region's 9-1-1 system. This further magnifies the importance of keeping the system in a constant state of good repair.

As the steward of this regional system, PRPC aims to operate PANCOM efficiently and cost-effectively. When opportunities arise, staff strives to reduce annual operating costs by eliminating recurring costs. This year, PRPC built a new PANCOM tower in Lipscomb County which will cut nearly \$12,000 a year from the system's annual budget. Staff anticipates eliminating additional leases in the coming year with the construction of two new PANCOM towers.





## REGIONAL HOMELAND PROJECTS

Each year, the Panhandle receives federal State Homeland Security Program (SHSP) funding through the Governor's Office. The funds are then directed toward projects intended to enhance the region's preparedness posture based on priorities identified by the PRPC's Panhandle Regional Emergency Management Advisory Committee (PREMAC). The PREMAC's work is guided by the principle that every SHSP dollar received by the region should have a benefit to the entire region.

This year, the PRPC Board, acting on the PREMAC's SHSP recommendations, approved funding for regional projects that will support planning and training, communications, mass notification and bomb/IED response across the Panhandle.

## REGIONAL RESPONSE PLAN

This year, PRPC staff undertook the updating of the Panhandle Regional Response Plan. The plan's objective is to facilitate the mustering of multi-agency responses to large-scale disasters or emergencies that impact the Panhandle. Each city and county in the Panhandle has voluntarily signed onto a regional mutual aid agreement that's steeped in the spirit of "neighbor helping neighbor." This updated plan simply works to harness and coordinate teams and resources, separately controlled by the Panhandle's cities and counties, to affect a robust and timely response to regional incidents.

## TORNADO SHELTERS

The Regional Residential Safe Room Program assists with the costs of installing tornado/storm shelters, built to FEMA 361 standards, in homes throughout the Texas Panhandle. As funding is available, residents can apply for this assistance on a first come/first serve basis. The program provides rebates to homeowners that cover up to 50% of the costs of their shelter in an amount not to exceed \$3,000. This year, 275 Panhandle residents received shelter rebates through this program.

275

*Panhandle residents  
received shelter  
rebates through  
The Regional Residential  
Safe Room Program*





WHEELER - COUNTY - COURT - HOUSE



## COVID-19 RESPONSE



### **PRPC WORKED TO HELP COMMUNITIES WITH \$1.8 MILLION IN ADDITIONAL FUNDING**

In the wake of the pandemic, the Federal Government unleashed several streams of funding under the CARES Act, aimed at assisting local governments in blunting the impact of COVID-19 on their operations. One of these was the Coronavirus Emergency Supplemental Funding (CESF) provided through the US Department of Justice and administered in Texas by the Public Safety Office (PSO) of the Governor's Office. The PSO allocated near \$668,000 in CESF funding for Panhandle jurisdictions; primarily intended for law enforcement agencies. The grant submission deadline fell shortly after the allocation announcement was made. There wasn't time to offer the one-on-one type of grant writing assistance the PRPC typically provides in these instances.

To work within the deadline and assist as many counties as possible, PRPC developed several narrative and budget templates to help streamline the local grant writing process. Multi-county online TA meetings were conducted and help videos were created and posted on the PRPC's website. By the deadline, Panhandle jurisdictions had collectively submitted nearly \$2 million in CSF requests. As it now appears, because a number of other regions did not fully request their allocations, the Panhandle is set to receive \$1.8 million in CESF funding. These results are a testament to the region's ability to respond quickly and work together to take advantage of short-lead opportunities that can have significant benefits to the Panhandle.

### **CORONA VIRUS RELIEF FUNDING**

The Coronavirus Relief Fund (CRF) is another of the several federal funding streams born out of the CARES Act designed to assist local governments in mitigating the impacts of the COVID-19 pandemic. This funding allows for the payment of necessary expenditures, incurred as a result of the Coronavirus public health emergency between March 1, 2020, and December 30, 2020. Every city and county in the region is receiving CRF funding; based on an allocation of \$55 per resident.

The staff worked to provide technical assistance in mass through bi-weekly multi-county informational meetings. By organizing meetings between the State agency charged with overseeing the CRF in Texas and the region's local officials; by gathering and posting a collection of helpful CRF-related documents on the PRPC's website; and, by providing group updates as additional CRF information becomes available.

# Solid Waste Management

*The Regional Solid Waste Management Program assists the region's local government in implementing regional solid waste initiatives. The primary goal is to provide guidance in the development and implementation of local and regional initiatives for alternative forms of waste disposal.*

Solid Waste Department  
CITY OF DALHART



## SOLID WASTE PROGRAM GRANT FUNDING ▼

Designed to beneficially reuse or recycle waste rather than sending it to a landfill, funding is provided through the Texas Commission on Environmental Quality (TCEQ) and is generated off the “tipping fees” paid by landfill operators to the TCEQ for every ton of solid waste deposited into their landfill. Each year, the PRPC receives an allocation of funding to support a wide variety of local and regional projects.

**BOOKER ISD**

Partial Funding for a Skid Steer

**CITY OF GRUVER**

Baler

**CITY OF STRATFORD**

Baler

**CITY OF DALHART**

Knuckle Boom Truck

**CITY OF HAPPY**

Scrap Metal Roll-Off

**PRPC**

Marketing & Transportation

**CITY OF DUMAS**

Scrap Metal Roll-Off

**\$118,002**

Total funding  
for the region



## Panhandle Environmental Partnership

26 jurisdictions currently participate in the Panhandle Environmental Partnership of PEP. The PEP was created in 1998 to bridge the divide between cities and counties in the Panhandle that wanted to recycle and end markets that would accept the materials being recycled. Those end markets long overlooked the Panhandle due to the region's sparse population. However, by collectively marketing their materials through the PEP, its members have been able to establish long-term marketing ties for a variety of materials. The types of products most frequently recycled by PEP members today include cardboard, mixed paper, newsprint, office paper, scrap metal, used motor oil and scrap tires. That list will expand as PEP members decide to branch into other types of materials such as plastics.

The PEP's end goal is to provide Panhandle jurisdictions with a cost-effective alternative to landfilling their solid waste. This not only saves costly and limited landfill space, it's better for the environment. To that end, the PEP has partnered with Keep Texas Recycling – a program of Keep Texas Beautiful – to serve as the marketing agent for the member's materials. Having surpassed its 20th year of operation, the PEP concept has proven to be effective in enabling rural jurisdictions to maintain productive recycling programs.

# 85

LOADS OF RECYCLABLE MATERIALS

.....

# 993

TONS OF RECYCLABLE MATERIALS

.....

# \$35.5K

SAVED BY PANHANDLE RESIDENTS

.....

# \$45.5K

RETURNED TO PEP MEMBERS

# Criminal Justice

The PRPC's Criminal Justice program has been designated by the Office of the Governor, Criminal Justice Division as the responsible entity for regional criminal justice planning efforts for the 26-county area. The department assists in administering, monitoring, and reviewing grants for a range of activities.



*Living in Robert's county, it was important for our area to have a Deputy Sheriff to be able to more quickly respond to calls and medical emergencies. I drove four hours a day to attend this training that included laws in addition to medical. It was invaluable. I deeply appreciate the PRPC for giving me a scholarship to the Academy and for taking a chance on me.*

**-CHAD BLACK**  
Graduate of 121st PRLEA Class

## Law Enforcement Training

Each year, the PRPC receives criminal justice funding through the Governor's Office to support peace officer training in the Panhandle. Relevant training has always been a critical element of judicious public safety but now, as expectations are increasingly being heaped on police officers, the need for good training has become even more critical. For the past 40+ years, the PRPC has contracted with Amarillo College to provide Basic Certification Training and In-Service Training to the region's law enforcement agencies through the Panhandle Regional Law Enforcement Academy (PRLEA). The PRLEA has literally helped to train generations of officers to "serve and protect" communities across the Panhandle.

This past year, despite the COVID-19 interruptions, the PRLEA graduated 26 cadets who now qualify to serve as licensed peace officers and collectively provided 330 licensed Panhandle peace officers with 6,388 hours of in-service training.

**6,388**  
HOURS OF IN-SERVICE TRAINING

**26**  
CADETS

**330**  
PEACE OFFICERS TRAINED



The 121st PRLEA class  
**13 GRADUATES**

### FUN FACT

*this is the 27th consecutive academy to have a 100% pass rate on the TCOLE exam on the first attempt.*

# Criminal Justice Grants

The PRPC helped local entities apply for funding from the Criminal Justice Division of the Governor's Office. The department assists in administering, monitoring and reviewing grants for a range of activities that are designed and coordinated through local governments and victim services agencies.

The grants provide services in areas such as victim's services, prosecution, crime prevention, juvenile justice prevention and intervention as well as law enforcement training.



## FY20 CRIMINAL JUSTICE GRANT FUNDING ▼

### ▶ Victims of Crime Act

**05**

AGENCIES

**\$2,137,390**

TOTAL FUNDS DISTRIBUTED

### ▶ Justice Assistance Grant

**09**

AGENCIES

**\$431,342**

TOTAL FUNDS DISTRIBUTED

### ▶ Truancy Prevention

**01**

INDEPENDENT SCHOOL DISTRICT

**\$130,020**

TOTAL FUNDS DISTRIBUTED

### ▶ Violence Against Women Act

**02**

DISTRICT  
ATTORNEY'S  
OFFICES

**01**

COUNTY  
ATTORNEY

**\$285,012**

TOTAL FUNDS DISTRIBUTED

**\$2,983,764**

in state and federal grants to support local criminal justice projects and victim services programs

# Regional 9-1-1 Network

*The Regional 9-1-1 Network provides emergency communication services for 24 counties of the Texas Panhandle through a network of 22 call centers located throughout the region.*



The Regional 9-1-1 Network maintains 9-1-1 call-taking and network equipment, facilitates ongoing 9-1-1 dispatcher training, and provides information about 9-1-1 to the public.

Although the 9-1-1 Network staff does not answer 9-1-1 calls at the Planning Commission, the department is responsible for providing and maintaining the telecommunication links, equipment, geodatabase, training, public education, and mapping solutions to assist the public safety professionals of the Texas Panhandle.

**Maria Reynaga & Alexis Brooks**, Telecommunications Officers  
**MOORE COUNTY SHERIFF'S DEPARTMENT**

**99,457**  
ADDRESS POINTS  
FOR  
**24 TEXAS**  
COUNTIES  
AVAILABLE ONLINE

Allowing for law enforcement, paramedics, and fire crews to have another tool to locate callers more quickly.



**121,207**  
TOTAL CALLS  
**5,124**  
TOTAL TEXT MESSAGES





## 9-1-1 RELIABILITY

The Regional 9-1-1 Network covers 24,000 square miles of the Texas Panhandle and is among the most reliable systems in the State of Texas. The network experienced the fewest outages per square mile and call center. During fiscal years 2018 and 2019 the network has experienced 73 hours of outages in our 22 call centers. These outages are mostly due to telephone providers unable to deliver calls.

## PUBLIC EDUCATION

The Panhandle Regional 9-1-1 Network provides outreach to Panhandle citizens on the 'when, why, and how,' to dial 9-1-1 for emergency assistance. Mobile devices, text to 9-1-1, and Kari's Law have created a need to further educate the public. Due to pandemic restrictions, the Regional 9-1-1 Network has been using email and social media to create awareness and provide relevant information.

## PUBLIC SAFETY ANSWERING POINTS

With COVID-19 limiting the Regional 9-1-1 Network from visiting Public Safety Answering Points (PSAPs), the department was forced to utilize online training resources for PSAP staff. Site visits were conducted remotely, and Regional 9-1-1 Network staff verified the call, text, and equipment integrity from a test lab at the host site. Telecommunicator Appreciation Week usually provides an opportunity for the Regional 9-1-1 Network to visit each PSAP to show regional appreciation for the dispatchers. Unfortunately, this year, public education items were distributed to PSAP staff via mail.

## MAPPING DATA

This year, the Regional 9-1-1 Networks mapping department has refined key geographic resources on the 9-1-1 consoles. Nearly 3,000 searchable Common Place Locator (CPL) points have been added which allows PSAP staff to search for places by their name instead of the physical address. The layer includes restaurants, schools, agricultural facilities, etc. Additionally, the department has added improved parcel data, building footprint, and multiple building floorplans to the 9-1-1 consoles.

## NEXT GENERATION 9-1-1 MIGRATION

The Panhandle Regional 9-1-1 Network has entered into contracts to transition the software and data systems into a fully Next-Generation 9-1-1 (NG9-1-1) System. This system will remove all of the analog systems and services that 9-1-1 has depended upon since its origination. The network is in the final stages of approval regarding the Geographic Information Systems (GIS) data upload into the AT&T laboratory environment for quality assurance. All of these efforts will improve call delivery by getting callers to the correct call center based on location and provide much more useful data to the call taker.

# Dispute Resolution

The Dispute Resolution Center offers mediation assistance by trained impartial mediators to residents to help resolve conflicts of all types, many times avoiding going to court. More than 90% of the DRC cases involve family law cases which include mediating divorce parameters, custody issues, separation of property, dealing with existing debts, and child and spousal support. The DRC has a successful five-year settlement rate of 71%.



## TRAINED 12

### NEW MEDIATORS

at the end of last year and they officially started mediating this year.

## 183

CASES COMPLETED

## 9,400

MEDIATIONS TO DATE

## 544

VOLUNTEER HOURS

“The partnership that has been established between the DRC and my court here at JPI Randall County has proved extremely valuable to the citizens of Randall County, Canyon and WTAMU. Thank you Randy for all you have done!”

**HONORABLE J TRACY BYRD**  
Justice of the Peace, Pct 1, Randall County

“The DRC provides a very valuable service to a broad spectrum of our community. It provides an opportunity to resolve legal disputes that have often become very significant emotional and psychological issues regardless of the potential financial impact the matter may have.”

**STANLEY HOLLOWAY**  
Volunteer Mediator

# Budget Summary

## BUDGETED EXPENDITURES BY PROGRAM

WORKFORCE DEVELOPMENT	\$21,036,800
AGING	2,546,595
LOCAL GOVERNMENT SERVICES	365,404
ECONOMIC DEVELOPMENT	124,220
DISPUTE RESOLUTION	143,380
REGIONAL 9-1-1 NETWORK	1,749,314
CRIMINAL JUSTICE	202,637
SOLID WASTE MANAGEMENT	170,317
WATER PLANNING	226,579
EMERGENCY PREPAREDNESS	951,305
REGIONAL SERVICES	60,180
REGIONAL TRANSPORTATION PLANNING	36,894
RESERVE CONTRIBUTION	16,917
<b>TOTAL 2020 BUDGETED PROGRAM EXPENDITURES</b>	<b>27,630,542</b>

## BUDGETED EXPENDITURES BY SOURCE

FEDERAL FUNDS	\$70,000
FEDERAL FUNDS THROUGH STATE	21,851,491
STATE FUNDS	2,005,835
STATE EMERGENCY COMMUNICATIONS FUNDS	1,749,314
DISPUTE RESOLUTION COURT FEES (POTTER & RANDALL COUNTIES)	69,000
CONTRACT SERVICE FEES	1,447,600
LOCAL GOVERNMENT MEMBERSHIP DUES	68,380
LOCAL MATCHING CONTRIBUTIONS	321,599
INTEREST AND MISCELLANEOUS REVENUES	47,323
<b>TOTAL 2020 BUDGETED PROGRAM REVENUES</b>	<b>\$27,630,542</b>

# Advisory Committees

## PANHANDLE WATER PLANNING GROUP

C.E. Williams, Chair ..... White Deer  
 Don Allred ..... Oldham County  
 Dr. Brent Auvermann ..... Amarillo  
 Joe Baumgardner ..... Amarillo  
 Dr. Nolan Clark ..... Amarillo  
 Vernon Cook ..... Roberts County  
 Dean Cooke ..... Borger  
 Rick Gibson ..... Amarillo  
 Rusty Gilmore ..... Amarillo  
 Glen Green ..... Amarillo  
 Janet Guthrie ..... Canadian  
 Floyd Hartman ..... Amarillo  
 Bobby Kidd ..... Childress  
 Danny Krienke ..... Perryton  
 David Landis ..... Perryton  
 Roy Henry Messer ..... Amarillo  
 Dillon Pool ..... Amarillo  
 Kent Satterwhite ..... Sanford  
 Lynn Smith ..... Wellington  
 Beverly Stephens ..... Borger  
 Janet Tregellas ..... Booker  
 Steve Walthour ..... Dumas  
 Ben Weinheimer ..... Amarillo

## PANHANDLE WORKFORCE DEVELOPMENT BOARD

Charlie Rivas, Chair ..... Amarillo  
 Francisco Apodaca ..... Pampa  
 Irene Arnold ..... Amarillo  
 Jay Barrett ..... Amarillo  
 Norman Bearden ..... Lubbock  
 Texas "Tex" Buckhaults ..... Clarendon  
 Kevin Caddell ..... Dalhart  
 Dr. Tamara Clunis ..... Amarillo  
 Drew Downs ..... Amarillo  
 Shawna Elliott ..... Pampa  
 Heather Freeman ..... Amarillo  
 Mike Good ..... Amarillo  
 Michelle Griffin ..... Borger  
 Kristi Hanes ..... Amarillo  
 Jason Henderson ..... Amarillo  
 Laura Lopez ..... Pampa  
 Lynda McCarty ..... Amarillo  
 Tonya McWilliams ..... Amarillo  
 Art Martinez ..... Hereford  
 Matt Parker ..... Amarillo  
 Valarie Robbin ..... Amarillo  
 John West ..... Amarillo  
 Lisa White ..... Amarillo  
 Michael Wright ..... Dumas  
 Magi York ..... Amarillo

## CRIMINAL JUSTICE ADVISORY COMMITTEE

Norma Luginbyhl, Chair ..... Borger  
 Kent Birdsong ..... Oldham County  
 Shelly Bohannon ..... Amarillo  
 Letta Day ..... Amarillo  
 Stephanie Fowler ..... Hartley County  
 Rob Hampton ..... Pampa  
 Sace Hardman ..... Panhandle  
 Brent Harrison ..... Hereford  
 Harry Hueston ..... Canyon  
 Monty Hysinger ..... Dumas  
 Joe Jarosek ..... Canadian  
 Joseph Loftus ..... Amarillo  
 Anna Kate Nobile ..... Swisher County  
 Sara Northrup ..... Amarillo  
 Nina Parvin ..... Randall County  
 Cynthia Perales ..... Deaf Smith County  
 Traci Rogers ..... Amarillo  
 Bruce Scott ..... Dallam County  
 Randall Sims ..... Potter County

## REGIONAL SOLID WASTE MANAGEMENT ADVISORY COMMITTEE

Tommy Bogart, Chair ..... Stratford  
 Jason Anderson ..... Borger  
 Drew Brassfield ..... Fritch  
 Anju Chalise ..... Austin  
 Brittany Crawford ..... Amarillo  
 Orrin Dankworth ..... Amarillo  
 Leander Davila ..... Friona  
 James Davis ..... Tulia  
 Chris Douglas ..... Spearman  
 Danny Gaines ..... Clarendon  
 Curtis Green ..... Dalhart  
 Scott Honeyfield ..... Amarillo  
 Brandon Knapp ..... Perryton  
 Susan Leary ..... Childress  
 Cesar Marquez ..... Bovina  
 Richard Miller ..... White Deer  
 David Morris ..... Memphis  
 Harvey Perez ..... Panhandle  
 Tony Rios ..... Dimmitt  
 Dan Reese ..... Canyon  
 Isidro Renteria ..... Dumas  
 Ricky Rivera ..... Pampa  
 Julia Savala ..... Amarillo  
 Adam Schaer ..... Amarillo  
 Blair Snow ..... Amarillo  
 Johnny Torres ..... Hereford  
 Cheryl Untermeyer ..... Austin  
 John Michael Walker ..... Wheeler  
 Kenny Welch ..... Texline  
 Tommy Wyatt ..... Canadian

## PANHANDLE RURAL PLANNING ORGANIZATION

Wes Ritchey, Chair ..... Dallam County  
 Don Allred ..... Oldham County  
 Kit Black ..... TxDOT Amarillo  
 George Briant ..... Hemphill County  
 Terri Carter ..... Sherman County  
 Brian Crawford ..... TxDOT Amarillo  
 Aldo Gallegos ..... Cactus  
 Kelly Garrison ..... Channing  
 Ronnie Gordon ..... Hartley County  
 Ernie Houdashell ..... Randall County  
 Cindy Irwin ..... Hutchinson County  
 Charles Kelly ..... Ochiltree County  
 David Landis ..... Perryton  
 Dan Looten ..... Carson County  
 Travis Muno ..... Amarillo  
 Chris Porter ..... Gray County  
 Joe Price ..... Borger  
 Dan Reese ..... Canyon  
 Hugh Reed ..... Armstrong County  
 Rowdy Rhoades ..... Moore County  
 Tom Simons ..... Hereford  
 Mickey Simpson ..... Lipscomb County  
 James Stroud ..... Dalhart  
 Nancy Tanner ..... Potter County  
 Rick Tennant ..... Roberts County  
 Michael Tice ..... Skellytown  
 D.J. Wagner ..... Deaf Smith County  
 Benny Wilson ..... Hansford County

## PANHANDLE REGIONAL ORGANIZATION TO MAXIMIZE PUBLIC TRANSPORTATION

Travis Muno, Chair ..... Amarillo  
 Desha Butler ..... Amarillo  
 Melissa Carter ..... Amarillo  
 Jim Chilcote ..... Amarillo  
 Eric Garcia ..... Amarillo  
 Jeremy Geyman ..... Lubbock  
 Alfredo Gonzales ..... Amarillo  
 Jana Goodman ..... Amarillo  
 Dan Looten ..... Carson County  
 Jay Mayden ..... Childress County  
 Trent Morris ..... Amarillo  
 Robin Moseley ..... Amarillo  
 Richard Neill ..... Amarillo  
 Laura Reyher ..... Amarillo  
 Rowdy Rhoades ..... Moore County  
 Joe Rogers ..... Amarillo  
 Lylene Springer ..... Amarillo  
 Susan Stevenson ..... Amarillo  
 Nancy Tanner ..... Potter County  
 Marita Wellage-Reiley ..... Amarillo  
 Benny Wilson ..... Hansford County

**PANHANDLE REGIONAL  
EMERGENCY MANAGEMENT  
ADVISORY COMMITTEE**

Chris Forbis, Chair..... Randall County  
 Sam Baucom..... Amarillo  
 Suzanne Bellsnyder..... Spearman  
 Blaine Bertrand..... Randall County  
 Martin Birkenfeld..... Amarillo  
 Kyle Brack..... Amarillo  
 Tommy Brooks..... Dumas  
 Tim Case..... Groom  
 Leslie Chisholm..... Borger  
 Ken Daughtry..... Wheeler County  
 Dr. Robert E. Deotte..... Canyon  
 Trey Ellis..... Parmer County  
 David Fischer..... Canyon  
 Steve Fuston..... Dumas  
 Randy Geries..... Parmer County  
 Mike Gittinger..... Amarillo  
 Dr. Sherri Gress..... Amarillo  
 Danny Hardcastle..... Wheeler County  
 Will Hendon..... Amarillo  
 Brian Holt..... Booker  
 Cindy Irwin..... Hutchinson County  
 Jimmy Lanning..... Stratford  
 Greg Lee..... Pampa  
 P. J. Lemons..... Amarillo  
 Russell Luther..... Amarillo  
 Jay Mayden..... Childress County  
 Kevin McClaran..... Amarillo  
 James McDonald..... Amarillo  
 Rodney Mosier..... Amarillo  
 Katie Noffske..... Amarillo  
 Chip Orton..... Amarillo  
 Henry Perry..... Amarillo  
 B. J. Potts..... Dimmitt  
 Dan E. Reese..... Canyon  
 Jo Dee Robinson..... Silverton  
 Kevin Starbuck..... Amarillo  
 Mike Story..... McLean  
 Dean Turney..... Hereford  
 Eric Wallace..... Amarillo  
 Ben Weinheimer..... Amarillo  
 Ross Wilson..... Amarillo  
 Zack Wilson..... Amarillo

**DISPUTE RESOLUTION  
CENTER ADVISORY BOARD**

Dave Kemp, Chair..... Amarillo  
 Tracy Byrd..... Randall County  
 Vaavia Edwards..... Amarillo  
 Debra Horn..... Amarillo  
 H.R. Kelly..... Potter County  
 Dale Rabe..... Childress  
 Chuck Speed..... Amarillo  
 Nancy Tanner..... Potter County  
 Phil Vanderpool..... Pampa  
 Doug Woodburn..... Amarillo

**REGIONAL 9-1-1 NETWORK  
ADVISORY COMMITTEE**

Lance Richburg, Chair..... Pampa  
 Brian Booker..... Amarillo  
 Belinda Daniels..... Wheeler County  
 Vance Easley..... Childress County  
 Kenneth Eggleston..... Lipscomb County  
 Mark Garcia..... Amarillo  
 Misty Garrett..... Hansford County  
 Randy Geries..... Parmer County  
 Robin Grice..... Moore County  
 Vicki Groneman..... Oldham County  
 Dianne Guffy..... Dallam County  
 Tom Heck..... Hall County  
 Krystie King..... Armstrong County  
 Kara Maslik..... Borger  
 Kalee Massey..... Carson County  
 Gary McFall..... Roberts County  
 Jeremy Oatmanv..... Hemphill County  
 Cheryl Phillips..... Donley County  
 Kyle Ray..... Dumas  
 Kent Riley..... Collingsworth County  
 Sal Rivera..... Castro County  
 Jeannie Rogers..... Tulia  
 Mike Smith..... Perryton  
 Jennifer Spurlock..... Sherman County  
 Kirsten Williams..... Hereford

**ROLLING PLAINS  
ORGANIZATION FOR RURAL  
TRANSPORTATION**

Dr. John Howard, Chair .. Briscoe County  
 Kevin Brendle..... Dickens County  
 Mark Christopher..... Foard County  
 Duane Daniel..... King County  
 Jerry Hefley..... Wheeler County  
 Karl Holloway..... Cottle County  
 Ronald Ingram..... Hardeman County  
 John James..... Collingsworth County  
 Annabel Jurado..... TxDOT Childress  
 Jay Mayden..... Childress County  
 Jim Meador..... Motley County  
 Wayne Nance..... Briscoe County  
 Ray Powell..... Hall County  
 Cary Preston..... Childress  
 Marty Smith..... TxDOT Childress  
 Chuck Stead..... TxDOT Childress  
 Stan Wojcik..... Knox County

**PANHANDLE WORKFORCE  
DEVELOPMENT CONSORTIUM  
GOVERNING BODY**

Harold Keeter, Chair..... Swisher County  
 Terri Carter..... Sherman County  
 Cindy Irwin..... Hutchinson County  
 Dan Looten..... Carson County  
 Jay Mayden..... Childress County  
 Ginger Nelson..... Amarillo  
 Chris Porter..... Gray County

**AREA AGENCY ON AGING  
ADVISORY COUNCIL**

Desha Butler, Chair..... Amarillo  
 Alan Abraham..... Amarillo  
 Erin Bergin..... Perryton  
 Elvira Blakemore..... Amarillo  
 Andy Crocker..... Amarillo  
 Michelle Floyd..... Amarillo  
 Jessica Martinez-Garcia..... Lubbock  
 Shannon Skiles..... Amarillo  
 Serena Steed..... Amarillo  
 Isabell Villareal..... Amarillo  
 Ashley Wetter..... Amarillo  
 Joyce Williams..... Amarillo  
 Brad White..... Amarillo

**ECONOMIC DEVELOPMENT  
ADVISORY COMMITTEE**

Kristen Moudy, Chair..... Wheeler  
 Chris Alexander..... Friona  
 Kathy Allen..... Stratford  
 Shawn Campbell..... Perryton  
 David Dockery..... Clarendon  
 Greg Duggan..... Dalhart  
 Evelyn Ecker..... Canyon  
 Shawna Elliott..... Pampa  
 Andrew Freeman..... Amarillo  
 Karen Haddon..... Booker  
 Wade Hawkins..... Hereford  
 Howard Heath..... Claude  
 Katie Linger..... Borger  
 Nancy Manley..... Miami  
 Dion Miller..... Tulia  
 B. J. Potts..... Dimmitt  
 Woodrow Richardson..... Memphis  
 Jaci Roberson..... Vega  
 Mike Running..... Dumas  
 Jon Sessions..... Wellington  
 Dorrance "Doc" Smith..... Childress  
 Shane Spencer..... Canadian  
 Randy Stark..... Quitaque  
 Bonnie Thompson..... Spearman

**TEXAS REVENUE  
RECOVERY ASSOCIATION**

Don Jennings, Chair..... Perryton  
 Chris Coffman..... Granbury  
 Jennifer Gonzalez..... Amarillo  
 B. J. Potts..... Dimmitt  
 Tina Rex..... Spearman

**GROUNDWATER  
MANAGEMENT AREA #1**

Bob Zimmer, Chair..... Dumas  
 Jason Coleman..... Lubbock  
 Janet Guthrie..... Canadian  
 Danny Hardcastle..... Wheeler County  
 Thomas Isaacs..... Hemphill County  
 Lynn Tate..... Amarillo  
 Steve Walthour..... Dumas  
 C.E. Williams..... White Deer

# 30 Years of Service

REBECCA RUSK

What a true honor it has been to work for the Panhandle Regional Planning Commission. At the time I began my position as Executive Assistant, this 26-year-old young lady from Panhandle, Texas, never dreamed I'd have a 30-year career in public service. I never imagined I'd commute approximately 450,000 miles to and from work, prepare for and attend about 330 Board meetings, and assist in the creation and production of 30 PRPC Annual Reports. Time does fly when you are having fun!



The highlight of my career has been getting to know so many wonderful people of the Panhandle. It's been a joy to work with my PRPC Board members, area elected and appointed individuals, committee members, staff colleagues, and statewide colleagues. All of you folks made it a pleasure to walk into the office each day. What a privilege to be a part of the PRPC's growth and development in meeting its mission of making the Panhandle a better place to live and work.

I know that DeShayne Hall is excited to be a part of the Planning Commission now, and will do a great job as Executive Assistant. Don't hesitate to drop her an email or give her a phone call if you need anything. Thank you all for making my job so enjoyable and thank you also for your service to your communities.

**Take care friends!**

*Rebecca Rusk*

**REBECCA RUSK**  
Executive Manager (1990-2020)



**Rebecca Rusk**  
EXECUTIVE MANAGER (1990-2020)

**DeShayne Hall**  
EXECUTIVE ASSISTANT (2020)

“

Alone we can  
do so little.

**Together we can  
do so much.**

HELEN KELLER





**PANHANDLE REGIONAL PLANNING COMMISSION**

415 SW 8TH AVE | P.O. BOX 9257 | AMARILLO, TX 79105 | 806.372.3381 | [THEPRPC.ORG](http://THEPRPC.ORG)